

CC-600 HOT WATER BOILER MASTER CONTROL

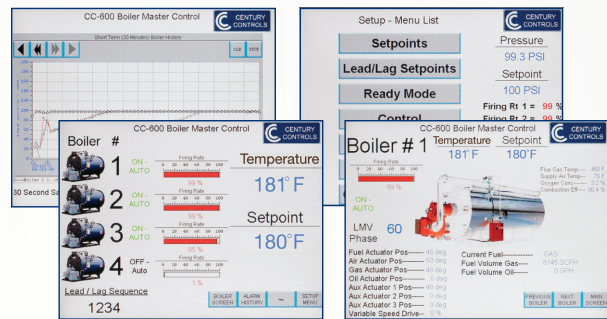
THE ALGORITHM MAKES THE DIFFERENCE™



Century Controls CC-600 Hot Water Boiler Master Controller is a proven way to optimize a series of modulating boilers to meet hot water demands. The patented algorithm, designed by boiler experts, controls boiler firing rates and makes intelligent lead/lag decisions. Operating setpoint can be reset utilizing the ΔT between the supply and return water or the outdoor temperature allowing the setpoint to be lowered under light load conditions and increased only when needed. Automatic alternation of lead boilers and idle boiler warm-up will provide even usage of boilers and keep standby boilers ready. The controller utilizes the sophisticated flexible algorithm to maintain tight control of water temperature in the most energy efficient manner. The algorithm makes the difference in the amount of money saved and the performance of the system.

HMI

- Touch screen user interface
- Easy setup and configuration
- Graphical display of boiler operation and historical trending
- Customizable



- Siemens Flame Safety Integration
- Digital communications with LMV Control Modules
- Seamless integration and startup
- One point access for all boiler information

Benefits

LOWER FUEL COSTS: Optimizes the boiler lead/lag operation by continually monitoring the rate of change in supply water temperature which allows multiple boilers to efficiently work together to achieve system setpoints. This algorithm eliminates lag boiler cycles and ensures boilers are firing at most efficient firing rates. This “smarter” algorithm typically produces a 5-10% reduction in fuel consumption.

LOWER MAINTENANCE COSTS: Reduces stress on boiler tubes and refractory by reducing lag boiler cycles and eliminating large firing rate changes. This “gentle” approach significantly extends boiler equipment life.

SUPERIOR VERSATILITY: Integrates with all boilers, burners, burner controls, including linkage based or linkageless systems. Also provides setpoint flexibility with regard to speed of load change response, idle boiler warm-up options, lead boiler alternation schemes, scheduling interface and integration with pumps and ancillary hot water systems.

REDUCE EMISSIONS: Reduces greenhouse gas emissions by reducing fuel consumption.

CC-600 HOT WATER BOILER MASTER CONTROL

THE ALGORITHM MAKES THE DIFFERENCE™



CC-600 Patented Boiler Master, Efficiency and Complete Control

Century Controls CC-600 Boiler Master Control provides efficient, coordinated control. The CC-600 will turn on or shed boilers based on the load in the system, maintaining a tight temperature setpoint and minimizing cycling of boilers. Energy is optimized by utilizing a reset of setpoint based on ΔT between supply and return water. This anticipates escalating loads and raises setpoints to prevent shock to the tubes from an excessive, temporary drop in return water temperature. Temperature setpoints are lowered when loading is light to save energy. Boiler firing rates are optimized to the most efficient operating conditions.

The Century Controls patented algorithm starts lag boilers based on load conditions, not temperature offset. Boilers are started before a large drop in temperature occurs. This allows a slow nudge of the boiler up to operating point reducing stress and thermal shock issues.

Specifications

- Display8" color TFT touch screen with Ethernet port and SD memory port
- Temperature Transducers50-250 °F. 4-20 mA transducer
- RatingsUL /CUL approved, NEMA 12 panel
- Modulating Output.....4-20 mA or 0-135 Ohm
- WarrantyLimited two-years
- FuelsSingle or dual fuel
- ControllerProgrammable Logic Controller

Options

- Automatic alternation of lead boiler
- Timed or temperature warm-up of idle boilers
- Dual setpoints for night or scheduled turndown
- ΔT or Outdoor temperature reset of setpoint
- Communication Interfaces: BACnet MSTP, BACnet IP, LON, Modbus RTU, Modbus TCP and Johnson Controls Metasys Integration
- Siemens LMV communications integration
- Condensing and non-condensing "Hybrid" control

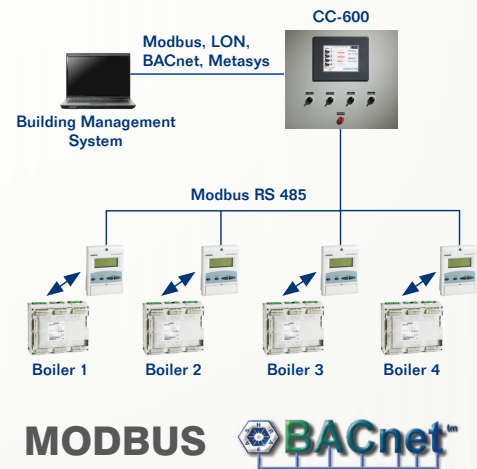
In addition to Master Controls, Century Controls has additional boiler room solutions that include O₂ trim systems, feed water and draft control

Control your boiler room operation

- Individual boiler setpoints for add and shed decisions
- Supply and Return ΔT reset of setpoint
- Dual control speeds for above or below setpoint
- On site configuration to meet load conditions
- Anticipatory control options or special sequences available
- Interfaces directly with linkage based and linkageless burner controls.
- Automatic or manual mode operation of boilers
- Intelligent lead/lag operation based on size and efficiency of boilers
- Automatic lead/lag alternation
- Idle boiler warm-up features

Enhanced Controller

Now available with two-way digital communication with the Siemens LMV system; one access point for all boiler and burner information, plus a large touch screen for easy setup and graphical display of operation.



Century Controls Technologies, Inc.
7332 Niagara Lane North
Maple Grove, Minnesota 55311
Phone 763.428.1201 • Fax 866.429.2721
www.centurycontrols.com
Email: info@centurycontrols.com

Represented By: